



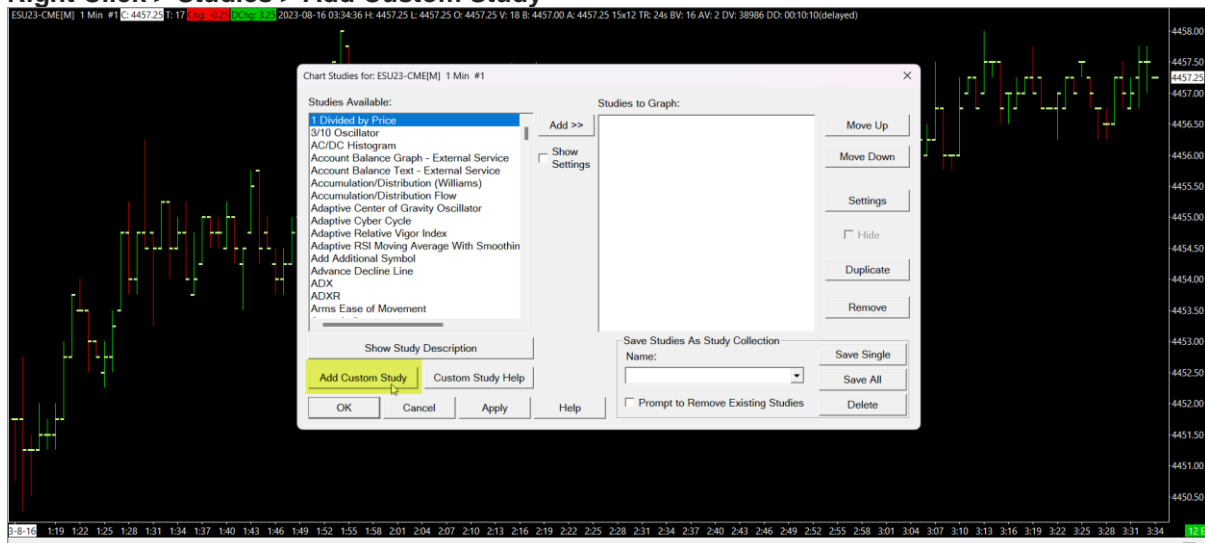
Sierra Chart Add-On Requirements

- Sierra Chart is reasonably up to date (version 2500+ recommended)
- Running Sierra Chart 64-bit version

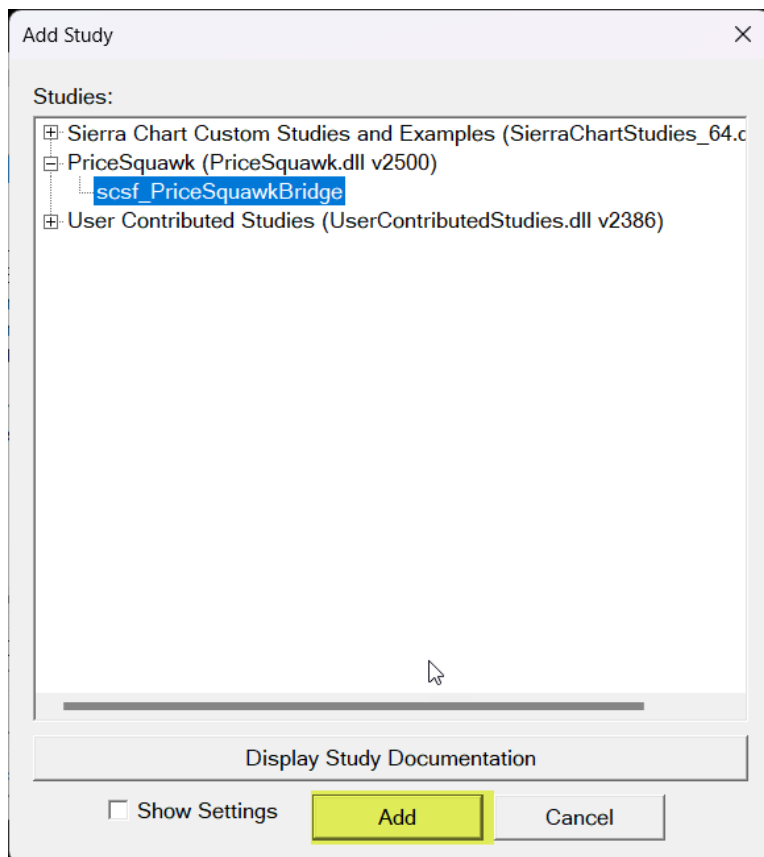
Installation Steps

- To run the installer, you will need to first close Sierra Chart.
- The installer assumes Sierra Chart is installed at c:\SierraChart, however you can change this during the installation process.
- Once successfully installed, open a new Intraday Chartbook for your chosen symbol
- Right-click and select '**Studies**' from the menu, then click on '**Add Custom Study**'
- Add the PriceSquawkBridge custom study.

Right Click > Studies > Add Custom Study



PriceSquawk > scsf_PriceSquawkBridge > Add



Support and Troubleshooting

- For using PriceSquawk you can check out our:
 - [Tutorial YouTube Videos](#)
 - [YouTube Channel](#)
 - [PriceSquawk User Manual](#)
- Contact support@pricesquawk.com if any issues. We are based in Australia so there might be a lag in response of a few hours.
- To remove/stop PriceSquawk you can remove the custom study from the chart or failing that close any PriceSquawk windows from the task bar.
 - Please capture your Sierra Chart message log and include this in any correspondence ([see Sierra Chart help on this](#))
- Please also include your PriceSquawk logs (*My Documents/PriceSquawk/Logs*)
- If you see the PriceSquawk application launch, but it never initializes (shows a single row of data and 'Waiting for tick data' in the status bar), then please report this, but also try opening a new chartbook and try again.

Thank you and **Welcome to PriceSquawk**